

**SPECIFICATION**

Steel

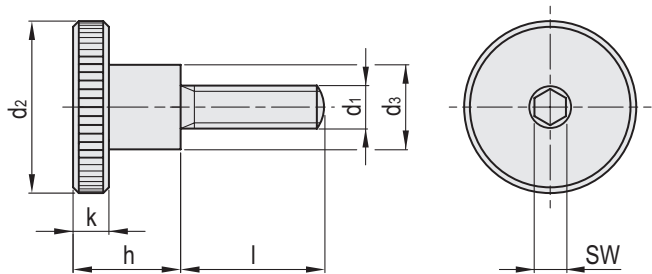
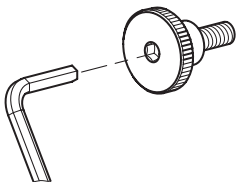
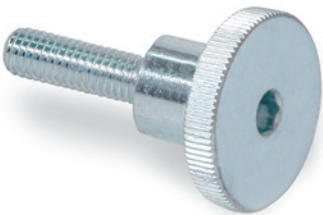
- Property class 8
- Head surface precision turned
- Zinc plated, blue passivated **ZB**

**FEATURES AND APPLICATIONS**

Knurled knobs GN 464.1 have the same dimensions as specified in knurled knobs DIN 464 (see page -). The thread of the screws generally extends up to the shoulder and ends in a runout without recess.

In comparison with DIN 464 (see page -), knurled knobs GN 464.1 are made of a higher-quality material and additionally have an internal hexagon.

This makes them suitable for a wide range of applications. They can also be quickly and easily operated without tools, or, if higher torques values are required, they can be tightened or loosened with a hexagon socket screw key.



Code	Description	d1	d2	d3	h	k	l	sw	⚖
GN.21001	GN 464.1-M5-10-ZB	M 5	20	10	11.5	4	10	4	15
GN.21002	GN 464.1-M5-12-ZB	M 5	20	10	11.5	4	12	4	16
GN.21003	GN 464.1-M5-16-ZB	M 5	20	10	11.5	4	16	4	18
GN.21004	GN 464.1-M5-20-ZB	M 5	20	10	11.5	4	20	4	20
GN.21011	GN 464.1-M6-12-ZB	M 6	24	12	15	5	12	5	28
GN.21012	GN 464.1-M6-16-ZB	M 6	24	12	15	5	16	5	32
GN.21013	GN 464.1-M6-20-ZB	M 6	24	12	15	5	20	5	36
GN.21014	GN 464.1-M6-25-ZB	M 6	24	12	15	5	25	5	41
GN.21021	GN 464.1-M8-16-ZB	M 8	30	16	18	6	16	6	62
GN.21022	GN 464.1-M8-20-ZB	M 8	30	16	18	6	20	6	67
GN.21023	GN 464.1-M8-25-ZB	M 8	30	16	18	6	25	6	73
GN.21024	GN 464.1-M8-30-ZB	M 8	30	16	18	6	30	6	78
GN.21031	GN 464.1-M10-20-ZB	M 10	36	20	23	8	20	8	107
GN.21032	GN 464.1-M10-25-ZB	M 10	36	20	23	8	25	8	114
GN.21033	GN 464.1-M10-30-ZB	M 10	36	20	23	8	30	8	121
GN.21034	GN 464.1-M10-40-ZB	M 10	36	20	23	8	40	8	130